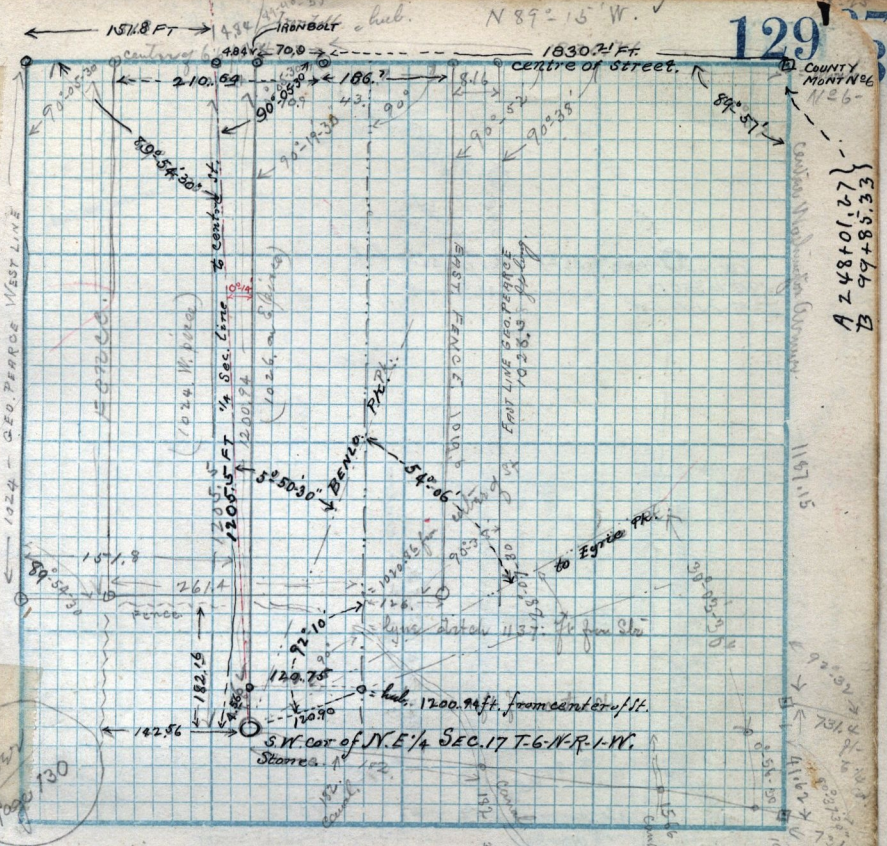


A 24801.27  
B 99485.33



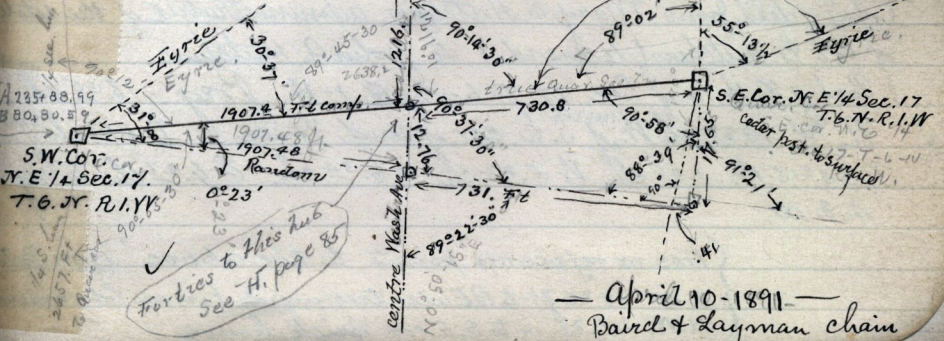
0227  
Page 130

Scale: Chains per inch.

Survey of the George Pearce Estate in Sec 17 T-6-N-R-1-W.

June 4<sup>th</sup> 1890

and a 0.14 = .004016 for distance 1205.5 from S.W. cor. of N.E 1/4 Sec 17 - 484 ft.



Forties to this hub  
See H. page 80

April 10-1891  
Baired & Layman chain